

SPECIFICATIONS

| | |
|---|--|
| Satellite Signals Tracked Simultaneously | |
| Signal tracking | 336 channels , or 220 channels BDS B1,B2,B3 GPS L1C/A,L1C,L2C,L2E,L5 GLONASS L1C/A,L1P,L2C/A,L2P,L3 QZSS, WASS, MSAS, EGNOS, GAGAN(SBAS) Galileo Glove-A and Glove-B, E1, E5A, E5B, E5AltBOC, E6 |
| MSS L-Band | Trimble RTX |
| GNSS features | Positioning output rate: 1Hz~50Hz Initialization time: <10s Initialization reliability: >99.99% |
| Positioning precision | |
| Code differential GNSS positioning | Horizontal: $\pm 0.25\text{m}+1\text{ppm}$ Vertical: $\pm 0.50\text{m}+1\text{ppm}$ SBAS positioning accuracy: typically <5m 3DRMS |
| High-Precision Static | Horizontal: $\pm 3\text{mm}+0.1\text{ppm}$ Vertical: $\pm 3.5\text{mm}+0.4\text{ppm}$ |
| Static and Fast Static | Horizontal: $\pm 2.5\text{mm}+0.5\text{ppm}$ Vertical: $\pm 5\text{mm}+0.5\text{ppm}$ |
| Real-time kinematic surveying | Horizontal: $\pm 8\text{mm}+1\text{ppm}$ Vertical: $\pm 15\text{mm}+1\text{ppm}$ |
| Network RTK | Horizontal: $\pm 8\text{mm}+0.5\text{ppm}$ Vertical: $\pm 15\text{mm}+0.5\text{ppm}$ |
| RTX | Horizontal: $\pm 2\text{cm}$ Vertical: $\pm 5\text{cm}$ |
| RTK initialization time | 2~8s |
| User interaction | |
| Operating Time | Linux |
| Buttons | Double Button Operation |
| Indicators | Five Indicator Lights |
| Web UI | Freely to configure and monitor the receiver by accessing to the web server via Wi-Fi or USB |
| Voice guide | iVoice intelligent voice technology provides status and voice guide Supporting Chinese, English, Korean, Russian, Portuguese, Spanish, Turkish and user define |
| Secondary development | Providing secondary development kit |
| Hardware performance | |
| Dimension(WxH) | 143mmX130mm |
| Weight | 1.43kg (2 Batteries included) |
| Material | Magnesium aluminum alloy shell |
| Operating | -45°C~+70°C |
| Storage | -55°C~+85°C |
| Humidity | 100% Non-condensing |
| Waterproof | IP67 standard, protected from short time immersion to depth of 1m |
| Dustproof | IP67 standard, fully protected against blowing dust |
| Shock and vibration | Withstand 2 meters pole drop onto the cement ground naturally |
| Power Supply | 9-25V DC, overvoltage protection |
| Battery | Rechargeable, Lithium-ion battery, 7.4V, Dual batteries hot-swappable, Battery Rod included in Base Receiver |
| Battery life | Dual batteries:>14h (static mode), >10h (internal UHF base mode), >12h (rover mode) |
| Communications | |
| I/O port | 5PIN LEMO external power port+RS232, 7PIN external USB(OTG)+Ethernet 1 radio antenna interface, SIM card slot |
| Wireless modem | Built-in radio, 1W/2W/3W switchable, typical work range 8km Barrier-Free" Measurement Technology: Repeater/ Router/ CSD mode |
| Frequency Range | 410-470MHz |
| Communication Protocol | TrimTalk450s, TrimMark3, SOUTH (KOLIDA) |
| Cellular Mobile Network | WCDMA/CDMA2000/TDD-LTE/FDD-LTE 4G network modem, downward compatible with 3G GPRS/EDGE |
| Double Module Bluetooth | BLEBluetooth 4.0 standard, support for android, ios cellphone connection Bluetooth 2.1+EDR standard |
| NFC Communication | Realizing close range (shorter than 10cm) automatic pair between receiver and controller (controller equipped NFC wireless communication module needed) |
| External Devices | Optional external GPRS/EDGE dual-mode communication module, switchable; allow to connect external WLAN card |
| WIFI | |
| Standard | 802.11 b/g standard |
| WIFI Hotspot | The WIFI hotspot allows smart mobile terminal to connect and access to the internal webserver to control and monitor receiver |
| WIFI data link | To work as the datalink that receiver is able to broadcast and receive differential data via WIFI |
| Data storage/ Transmission | |
| Data Storage | 8GB SSD internal storage Support external USB storage (up to 32 GB) and automatical cycle storage Changeable record interval, up to 50Hz raw data collection |
| Data Transmission | USB data transmission, supporting FTP/HTTP data download |
| Data Format | Differential data format: CMR+, CMRx, RTCM 2.1, RTCM 2.3, RTCM 3.0, RTCM 3.1, RTCM 3.2 GPS output data format: NMEA 0183, PJK plane coordinates, Binary code, Trimble GSOFF Network model support: VRS, FKP, MAC, fully support NTRIP protocol |
| Inertial sensing system | |
| Tilt survey | Built-in tilt compensator, correcting coordinates automatically according to the tilt direction and angle of the centering rod |
| Electronic bubble | Controller software display electronic bubble, checking leveling status of the centering rod real time |
| Thermometer | Built-in thermometer sensors, adopting intelligent temperature control technology which can monitor and adjust the temperature of receiver in real time |

KOLIDA
Professional's Choice

INFINITY RTK

K5Plus+

Enhanced Satellite Signal Tracking Ability
2cm Accuracy CenterPoint RTX
Dual Battery Hot-swappable
External battery rod



KOLIDA
Professional's Choice

GUANGDONG KOLIDA INSTRUMENT CO., LTD.

Add: 7/F, South Geo-information Industrial Park, No.39 Si Cheng Road, Tian He IBD, Guangzhou 510663, China
Tel: +86-20-22139033 Fax: +86-20-22139032
Email: export@kolidainstrument.com market@kolidainstrument.com http://www.kolidainstrument.com

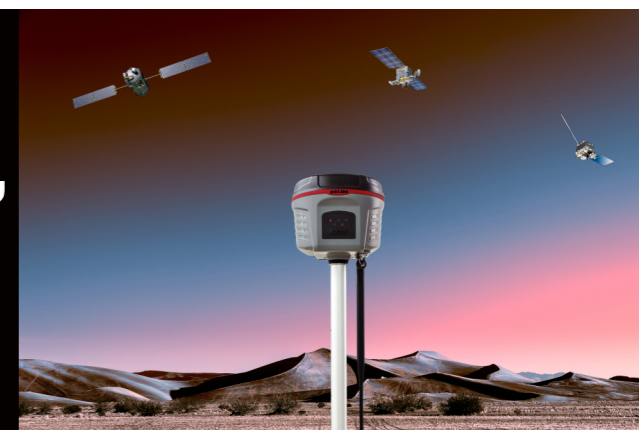
Work Faster, Wait Less.

The **Maxwell 7** GNSS engine inside K5plus+ provides an ultra-fast positioning speed, typically it starts tracking satellite signal within 5 seconds after turning on, coordinate can be acquired within 10 seconds.



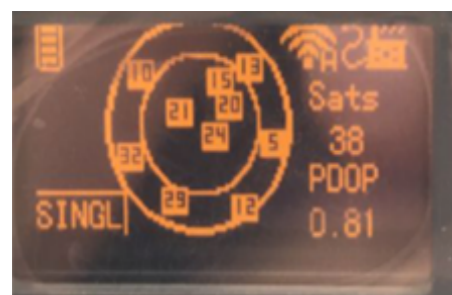
2cm Accuracy L-Band Correction, Infinite Freedom.

CenterPoint RTX correction service is available now! After subscribing to it, surveyor can work almost anywhere in the world without a base station or VRS network.

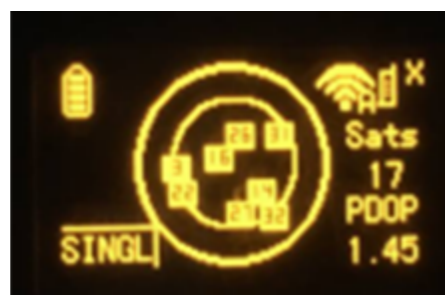


Improved Reliability Under Challenging Environment

With **336** channels solution, the usability of GLONASS & GALILEO satellites is greatly improved, so in harsh environment K5plus+ is able to track more satellites than the last generation receivers and provide more reliable positioning result.



38 satellites tracked by 336 channels receiver



17 satellites tracked by 220 channels receiver

Other Features

- Linux OS & 8G SSD Storage
- Web UI & WIFI
- OTG field data download
- Tilt Survey
- Electronic bubble
- Bluetooth 4.0
- NFC
- SMS remote control



Barrier-free measurement
To extend radio or VRS RTK working range by 3 creative working modes



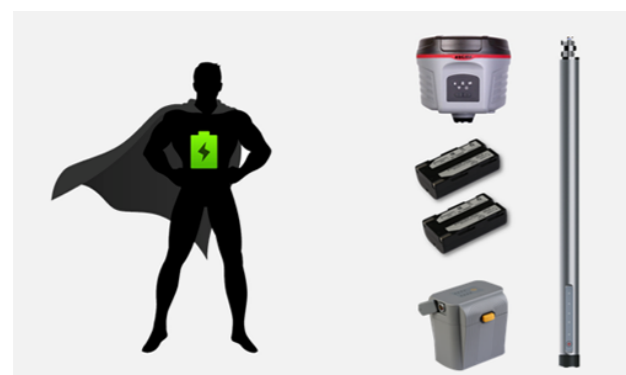
Long Range Radio Link
SDL400 built-in radio typically works for a 7-8 km range, cover 200 sq.km



Anti-interference
K5plus+ can work close to power plant, transformer substation, mobile signal tower and other interference source.



The best signal in town
4G network module enjoys fast and stable data transmission.



Increased Working hours

- Two units of 3400 mAh battery **hot-swappable**
- 6800 mAh Battery Rod** included in Base receiver set
- External Battery Case (optional)

Data Collector. Simply Trustable



- K720**
- Windows Mobile 6.5
 - 1Ghz CPU, RAM 256MB
 - 512 MB Nand, Extension to 32GB
 - 3.7V, 5400mAh removable Li-ion
 - 3.7 Inch 480X640VGA
 - 5 megapixel camera
 - WCDMA
 - GPS\BDS
 - Include EGSTAR3.0



- H3PLUS**
- Android 6.0
 - Quad-core 1.3GHz CPU, 2GB RAM
 - 4.3 Inches, WVGA 800X480dpi
 - 8 megapixel camera with auto focus
 - 6500mAh, up to 10Hours
 - Dual SIM Card
 - 4G FDD TDD network, 3G WCDMA
 - GPS\GLONASS\SBAS\A-GPS
 - Include EGSTAR

New app. New Productivity

SurvX Android

Windows CE data controller is too old technology? No problem. Simply download SurvX App on your smart phone or tablet. Enjoy the smooth operation of Android platform !



- Seamless Connection**
- NFC
 - Saving-Time Bluetooth Search
 - Auto Connection

- Rich & Practical Programs**
- CAD function & Line work
 - 3D display mode
 - Road & Power line program

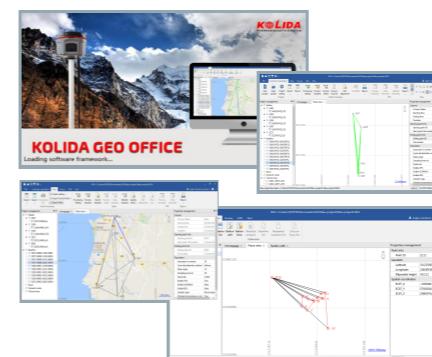
- Intuitive interactive design**
- Reducing mistakenly touching
 - User define program menu
 - Signal strength graphic display

- Creativity**
- Saving & Sharing coordinate system by QR code
 - Data recovery & Encryption function
 - Support Google map and other base map

Post-processing SW. Free of Charge

KOLIDA GEO Office

Integrates static data processing and kinematic data adjustment



- Intelligent**
- Antenna manager with popular receiver types.
 - Fast processing and clear display
 - Manually edit and filter satellite data for best result
 - Update online.

- Versatile**
- Compatible with numerous data format.
 - Export abundant types of report.
 - Transformable to RINEX format