

SPECIFICATIONS

KTS-442P	
Measuring Range	
1P	5.0km
3P	8-10 km
Non prism	1000m (1500m optional)
Digital Display	Maximum: 99999999.9999 Minimum: 0.1mm
Accuracy	With prism: 2mm+2ppm, without prism 3mm+2ppm
Measuring Time	Tracking 0.1s, Fine 0.3s (optimal)
Atmospheric Correction	Automatic Correction by Inputting Parameter
Prism Constant	Automatic Correction by Inputting Parameter
Angle Measurement	
Measurement Method	Absolute Encoding
Diameter of The Raster Disk	79mm
Minimum Reading	1 " / 5 " Optional
Accuracy	2 "
Detection Method	Horizontal: Four Sensors Vertical: Four Sensors
Telescope	
Image	Erect
Length	154mm
Effective Aperture	45mm (DTM 50mm)
Magnification	30 X
Field of View	1° 30'
Resolving Power	3 "
Minimum Focus	1m
Guide Light	Yes, (Red/Green)
Compensation	
System	Dual axis liquid-electric
Working Range	±3'
Resolving Power	1 "
Sensitivity of Vials	
Plate Vial	30 " /2mm
Circular Vial	8' /2mm
Laser Plummet	Yes
Data Storage and Communication	
Internal Memory	12MB (up to 100,000 points)
External Memory	USB Flash Disk (up to 256 GB)
Communication Port	USB, Bluetooth
Display	
Type	Dual sides, 6 lines, black and white
Battery	
Power Supply	Rechargeable battery (5000 mAH x 2 unit)
Voltage	7.4V DC
Operation Time	32 hours standby time by single battery
Dimension and Weight	
Dimension	160mm×150mm×330mm
Weight	5.7 kg
Environmental Specification	
Dust/Water (IEC60529)	IP66
Working Temperature Range	-30°C~50°C
T/P Sensor	Auto sensor and set
Humidity	95%, non-condensing

KTS-442P

The High Performance
Total Station with Great
Reliability, Flexibility and Economy



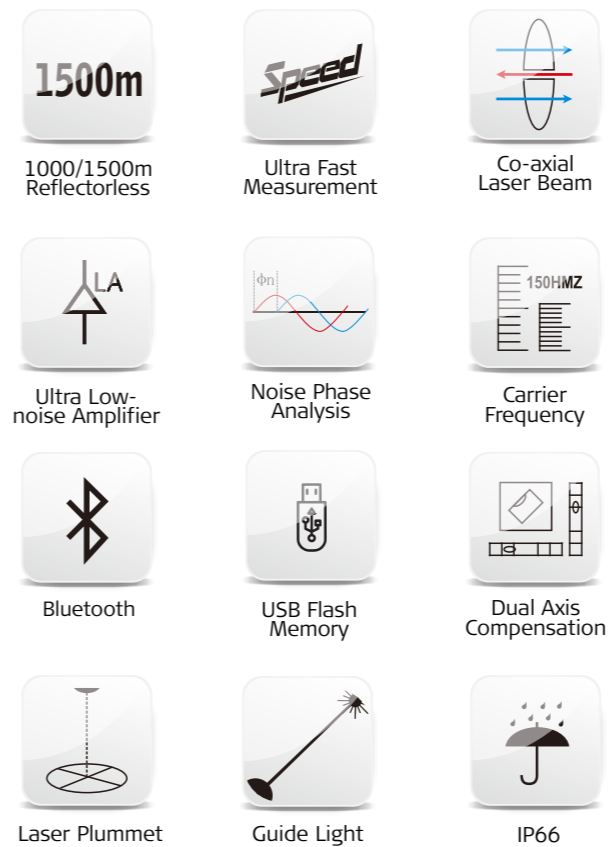
Kolida's Vision and Mission:

Delivering more values to global users by providing sustaining innovation and uncompromising quality

Seven Major Improvements

To lift your capability and productivity

TECHNOLOGIES



PROGRAMS



Video and Article: <http://www.kolidainstrument.com/product/details/id/81.html>

Welcome to Kolida Instrument, a fusion of passionate people, continuously innovated technology, services, as well as 30 years experience of manufacturing total station.

Every year more than 12,000 customers choose to purchase Kolida total stations. To ensure our instruments meet the high precision and quality requirement of global users, we manufacture them in state-of-the-art facilities around China.

We recognize certain employees as Master Craftspersons, exceptionally skilled people who take charge of manufacturing the parts of products that require extremely high precision and quality. Their Fast, accurate work creates uniform products of superb quality.

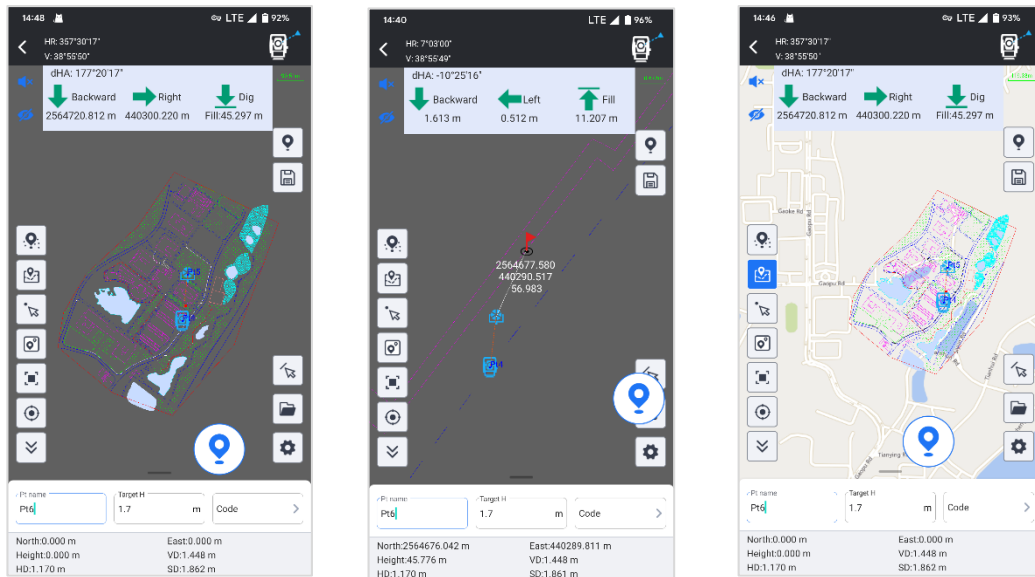
In addition to introducing the latest manufacturing facilities and technologies, we are shortening manufacturing lead times and reducing costs by reviewing production processes and innovating Procurement, to offer you a good instrument as affordable as possible.

You demand, our mission.



Total Station Module of Ksurvey App: Four Main Features to Give You More Power & Freedom

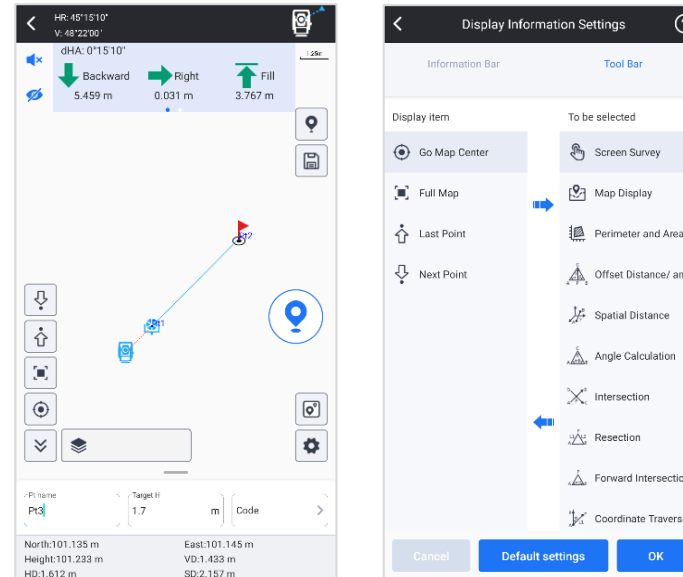
CAD Stakeout: Increasing Productivity & Decreasing Error



CAD Stakeout allows you to import **CAD basemap** and stakeout it, without inputting point coordinates one by one.

When you need, you also can connect to your local **online map** and overlap it to CAD basemap, to increase the precision of your job.

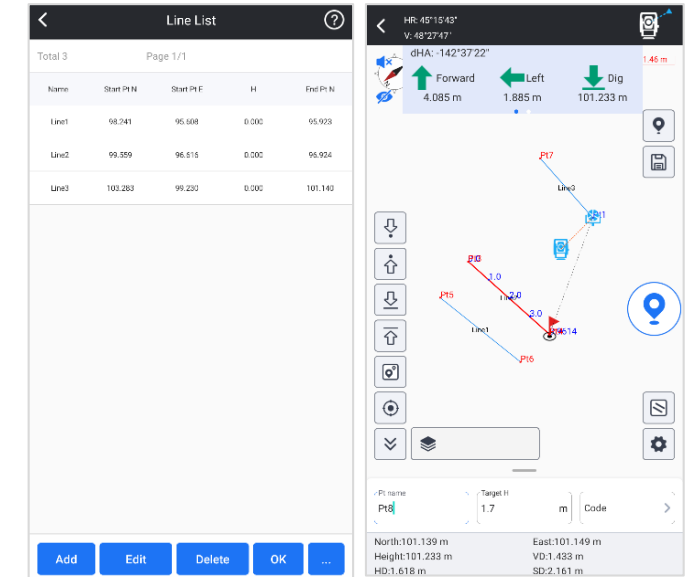
Point Survey & Stakeout: More Ease and Convenience



With graphic display, now it is easy for you to observe the relation between occupied point and target points. It will help you to make less mistakes when measuring many points.

The stakeout program screen displays information more completely, indicates target points more intuitively, your workflow will be smoother than before.

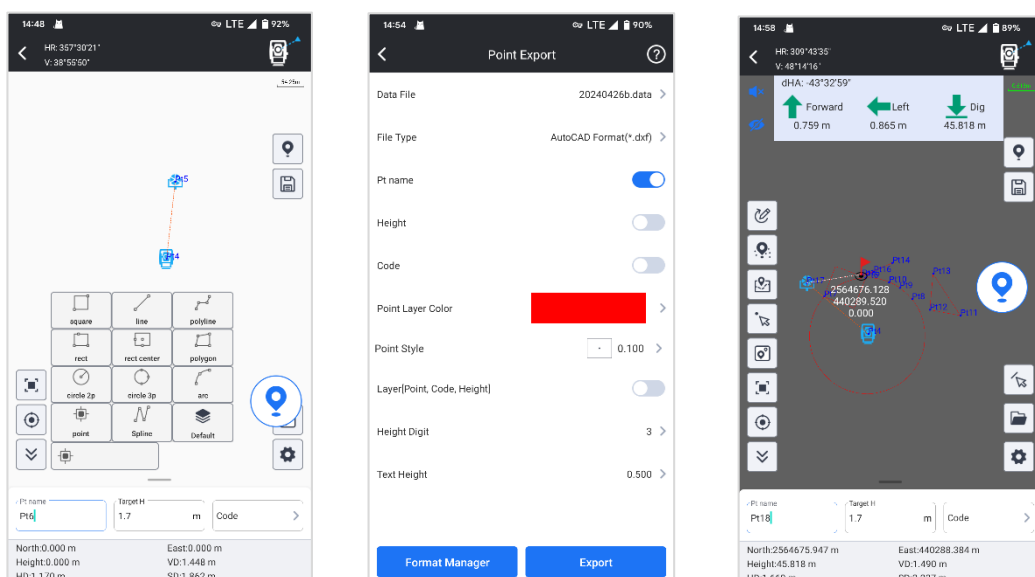
Line Stakeout: Smarter than Traditional Way



User is allowed to manually choose points from library, line will be formed by program automatically. Then user input interval distance, setout points will be calculated out and displayed on screen.

This function is suitable for road or other objective that is containing lines.

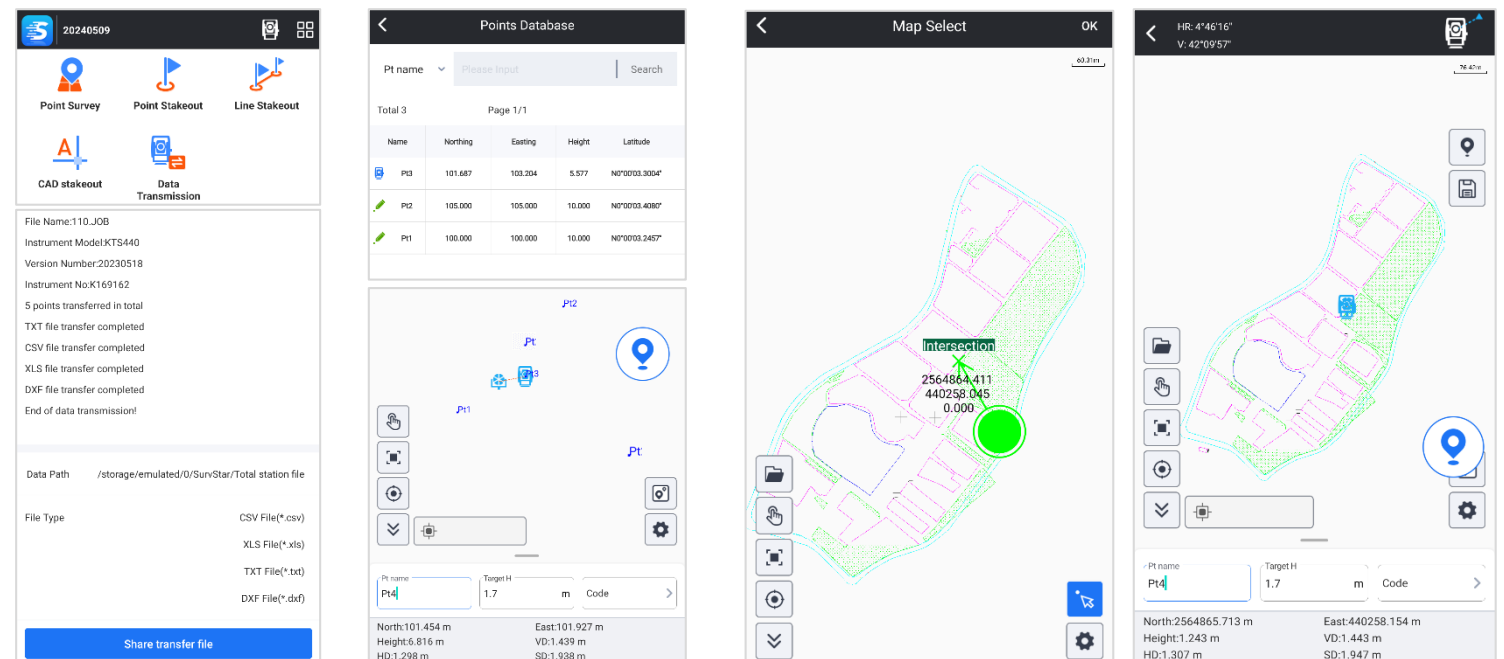
Measure & Draw: Save Time in Both Field work and Indoor Work



User is allowed to draw line, polygon, circle...up to 11 kinds of graphic, while measuring target points. No need to manually draw draft map anymore.

User is allowed to manage different objectives as different layers. The draft map can be saved and output in CAD format, and to be used in indoor works.

Other Features: More Innovation, No Limitation



Download & Share
(.csv, .dxf, .txt, .xls)

Resection

Set Occupied Point from CAD basemap or Graphic Map

Other Modules of Ksurvey App: GNSS, Marine Survey, 3D Laser Scanner...